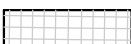
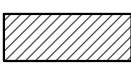
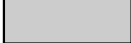


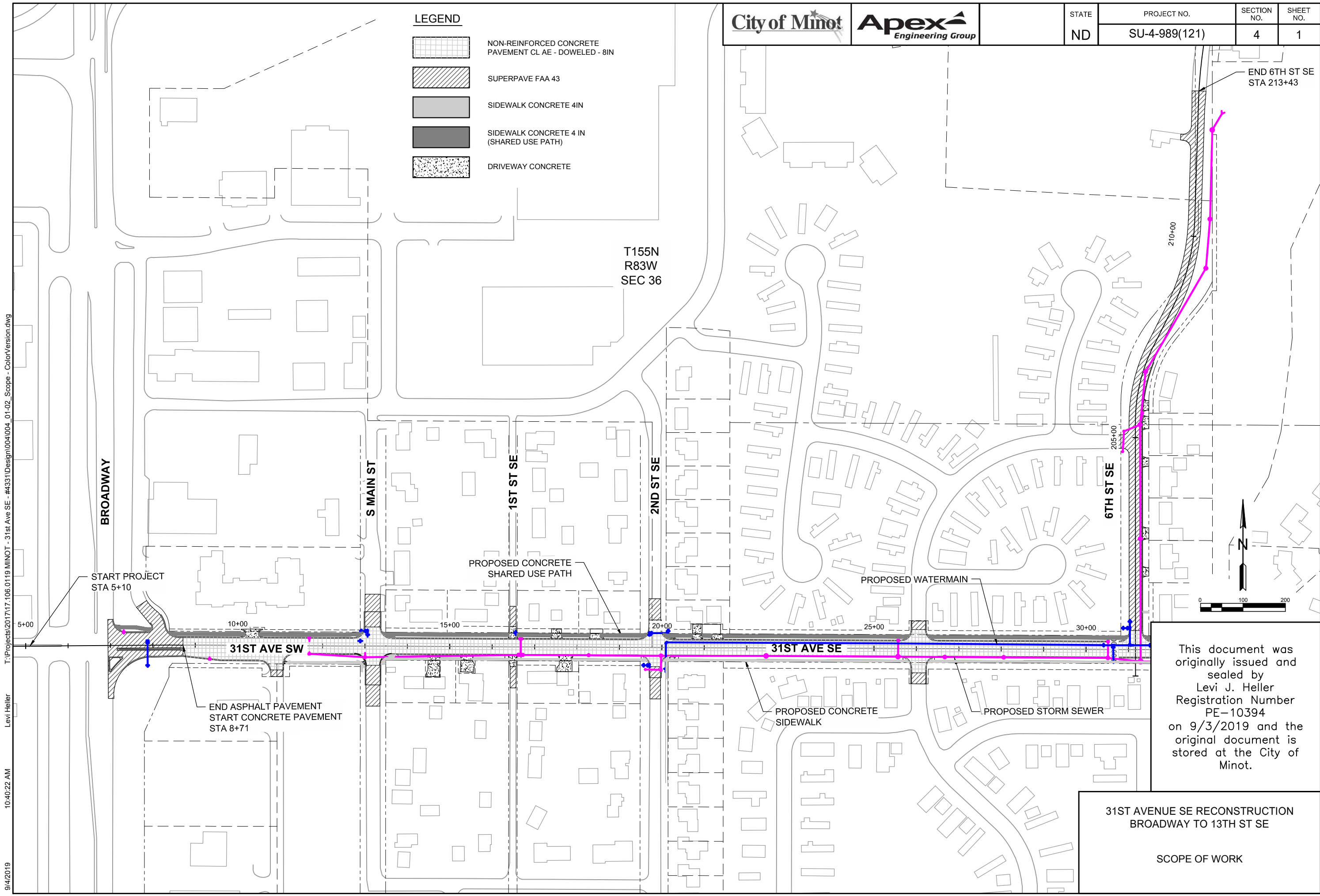


**LEGEND**

-  NON-REINFORCED CONCRETE PAVEMENT CL AE - DOWELED - 8IN
-  SUPERPAVE FAA 43
-  SIDEWALK CONCRETE 4IN
-  SIDEWALK CONCRETE 4 IN (SHARED USE PATH)
-  DRIVEWAY CONCRETE



This document was originally issued and sealed by Levi J. Heller Registration Number PE-10394 on 9/3/2019 and the original document is stored at the City of Minot.

**31ST AVENUE SE RECONSTRUCTION  
BROADWAY TO 13TH ST SE**

**SCOPE OF WORK**

T:\Projects\2017\17.106.0119 MINOT - 31st Ave SE - #4331\Design\004\004\_01-02\_Scope - Color\Version.dwg  
 Levi Heller  
 10:40:22 AM  
 9/4/2019